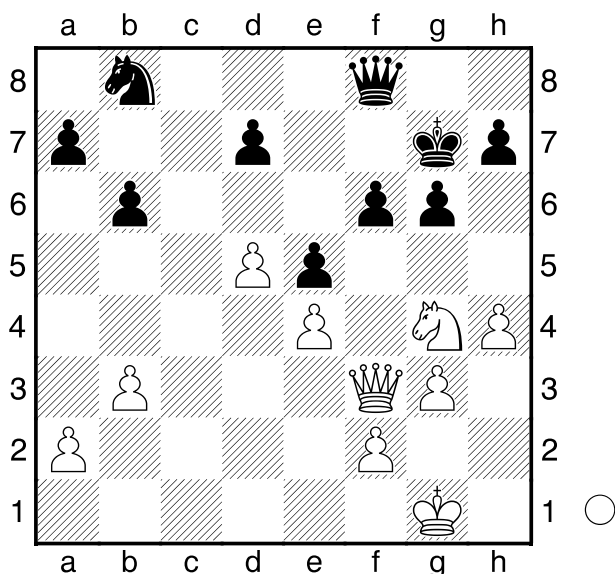


□ Slabe pole f5
 ■ vytvorit

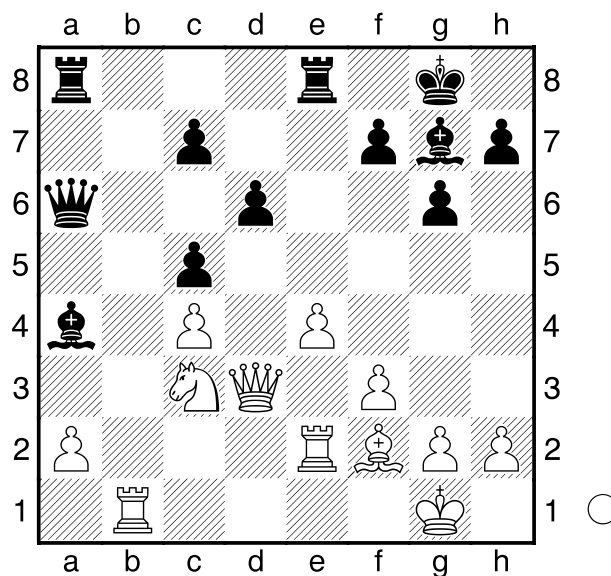


1.h4-h5! Hrozi h6+ a Dxf6 **g6xh5**
 Vzniklo slabe pole f5
 [1...Df8-e7 2.Df3-e3!]
2.Jg4-e3! d7-d6 3.Je3-f5+
 [3.Df3xh5 Bolo tiez dobre]
3...Kg7-g8
 [3...Kg7-g6 4.Df3-c3]
4.Df3-c3 Hrozi Dc7
 [4.Df3xh5 Bolo tiez dobre]
4...Jb8-a6 5.Dc3-c6 Ja6-c5 6.f2-f3
Jc5-d3 7.Dc6-c7
 [7.Dc6xd6? Meni aktivnu damu za pasivnu Df8xd6 8.Jf5xd6 Jd3-c1]
 [7.Jf5xd6 bolo dobre]
7...b6-b5 8.Dc7xa7 A biely stoji jasne na vyhru. Cierna dama je velmi pasivna, lebo stale hrozi mat na g7.

□ Slaby bod d5
 ■ Slaba diagonal a1-h8

(Diagram)

[%csl Rd5] **1.Jc3-d5!** obsadzuje slaby bod, hrozi Jxc7. **Va8-a7 2.Sf2-h4!**



hrozi Jf6+ Sxf6 Sxf6 a cierny kral je velmi slaby. Hrozilo by napriklad De3 a Dh6 **Sg7-d4+ 3.Kg1-h1 Kg8-g7**
4.Sh4-f2! Vynucuje vymenu ciernopolneho strelca a tym oslabuje cierneho krala **Sd4xf2 5.Ve2xf2**
 Hrozi Dc3+ **Da6-a5 6.Dd3-e2 f7-f6**
7.De2-b2! Ve8-f8 8.g2-g4! hrozi g5 h7-h6 **9.h2-h4! g6-g5 10.f3-f4!**
g5xh4 11.Jd5xf6! Vf8-f7 12.g4-g5
Sa4-c6 13.Vb1-g1 Da5-a3 14.g5xh6+ Kg7xh6 15.Vf2-h2
 [15.f4-f5! s hrozbou vg6 mat]
15...Sc6xe4+ 16.Jf6xe4 Da3-f3+
17.Db2-g2 Df3xg2+ 18.Vh2xg2 Vf7xf4 19.Vg2-g6+ Kh6-h7
20.Je4-f6+
1-0